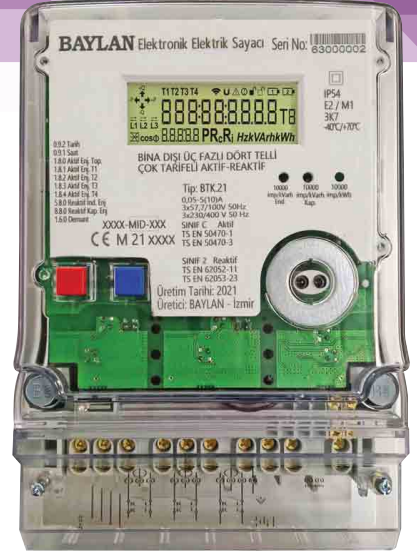


BTK.21 Three Phase Active-Reactive X5 Electronic Electricity Meter



GENERAL FEATURES

- MID (Measuring Instruments Directive) Certified
- Data storage without energy and non-volatile memory
- Keeps period data in its memory of at least 1 year
- More than 10 years of battery life and protection for date and time in case of energy absorption
- Consumption and time data can be read through optical port and LCD display without energy
- 8 Different time periods in a day, 4 different tariff types, 4 different day types
- LCD display showing amount of energy consumed according to tariff
- Demand measurement capacity in every 15 minutes
- Ability to show warnings on display in different situations such as clock corruption, low battery, terminal cover and top cover open, magnetic interference, communication warnings
- Automatic daylight save implementation (activation/deactivation through optical port)
- Instant voltage and current values for each phase; instant frequency and total active&reactive power values, terminal cover and top cover opening dates with OBIS codes display on LCD
- Voltage and current warnings are indicated on LCD.
- Load profile recording at least for 180 days and at 15 minute intervals
- Programmable demand measurement period (15-30-60 minutes) and manual demand reset feature through communication port or demand reset button once in a month
- Long life and maintenance free operation

TECHNICAL SPECIFICATIONS

Meter Type	3-Phase, 4-Wire
Connection Type	Through current transformers
Accuracy Class	Active : Class C Reactive : Class 2
Nominal Voltage (Un)	3x230/400 V - 3x57,7/100 V
Operating Voltage Range	0,8 Un and 1,15Un
Reference Frequency	50 Hz \pm 5%
Starting Current (Ist)	5 mA
Minimum Current (Imin)	0,05 A
Transitional Current (Itr)	0,25 A
Nominal Current (In)	5 A
Maximum Current (Imax)	10 A
IP Rating	IP54 (Outside)
Protective Class	Two (2)
Operating Temperature	-40 °C, +70 °C (3K7)
Mechanical Environment Class	M1 (According to 2014/32/EU)
Electromagnetic Environment Class	E2 (According to 2014/32/EU)
Voltage Circuit Power Consumption	< 2 W, 10 VA
Current Circuit Power Consumption	< 4 VA
ESD Immunity	Contact: 8 kV; Air: 15 kV
Impulse Voltage	6 kV
Meter Constant	10000 imp/kWh 10000 imp/kVARh ind. 10000 imp/kVARh kap.
LCD Display	6+3, Backlight
Communication	Optical, RS485 300-19200 Baud (EN 62056-21)
Real Time Clock Accuracy	< 0.5 sec/day (EN 62054-21)
Weight	0,91 kg

DIMENSIONS

